

Opportunity for Collaboration Between Engineering Colleges & LSGIs



21 May 2019

Local Self Government Institutions in Kerala

- There are 5 types of LSGIs in Kerala
 - Grama Panchayats – 941
 - Block Panchayats – 152
 - District Panchayat – 14
 - Municipalities – 87
 - Municipal Corporations – 6
- **Total 1200 LSGIs in Kerala**

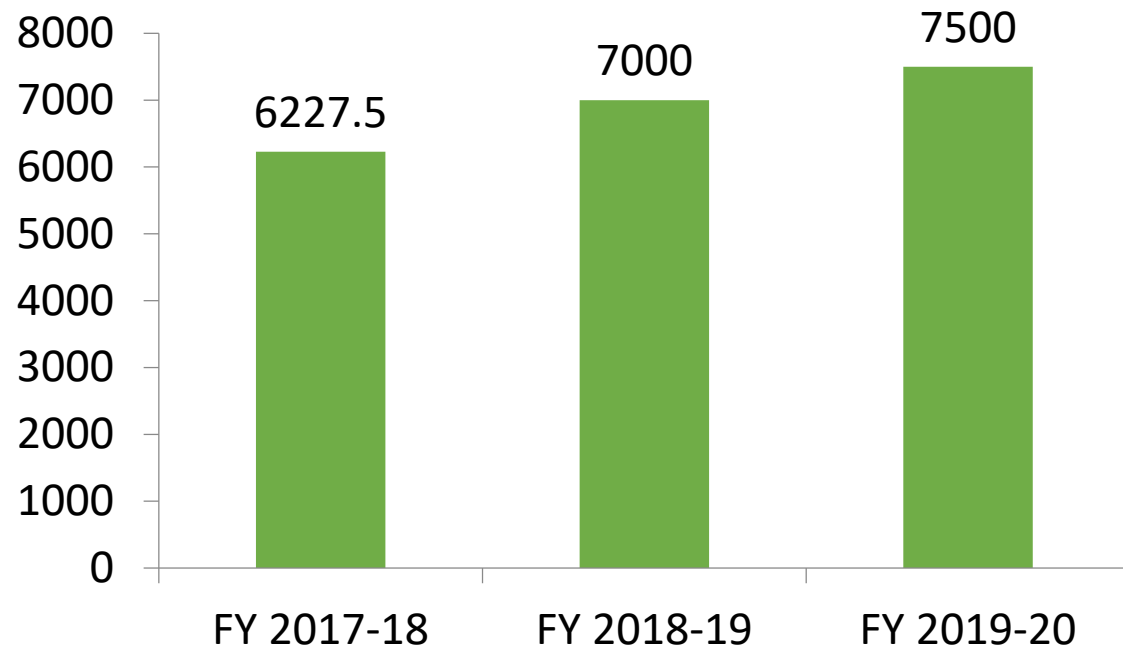
1200
LSGIs



Fund allocation of Last 3 years

3 Years of Plan fund allocation of LSGIs

Budget of LSGIs



LB Type wise allocation in 3 years

LB Type	FY 2017-18	FY 2018-19	FY 2019-20
Corporation	673.2	797.5	861.8
Municipality	901.0	1013.0	1104.5
District Panchayat	787.5	891.3	933.7
Block Panchayat	787.5	891.3	933.7
Grama Panchayat	3078.4	3406.9	3666.3
Total	6227.5	7000.0	7500.0

Amount in Crore

Average fund for a LSGI in 2019-20

LB Type	Average per LB in Cr
Corporation	143.6
Municipality	12.7
District Panchayat	66.7
Block Panchayat	6.1
Grama Panchayat	3.9



Sector wise Norms for Plan fund allocation

- Rural LSGIs min 30% in production sector
- Urban LSGIs Min 10% in production sector
- Infrastructure Rural max 45%
- Infrastructure Urban max 50%
- Service Sector Min 25%



Engineering Projects

- Need for improvement in Quality of Projects.
- Engineering Projects in 2018-19

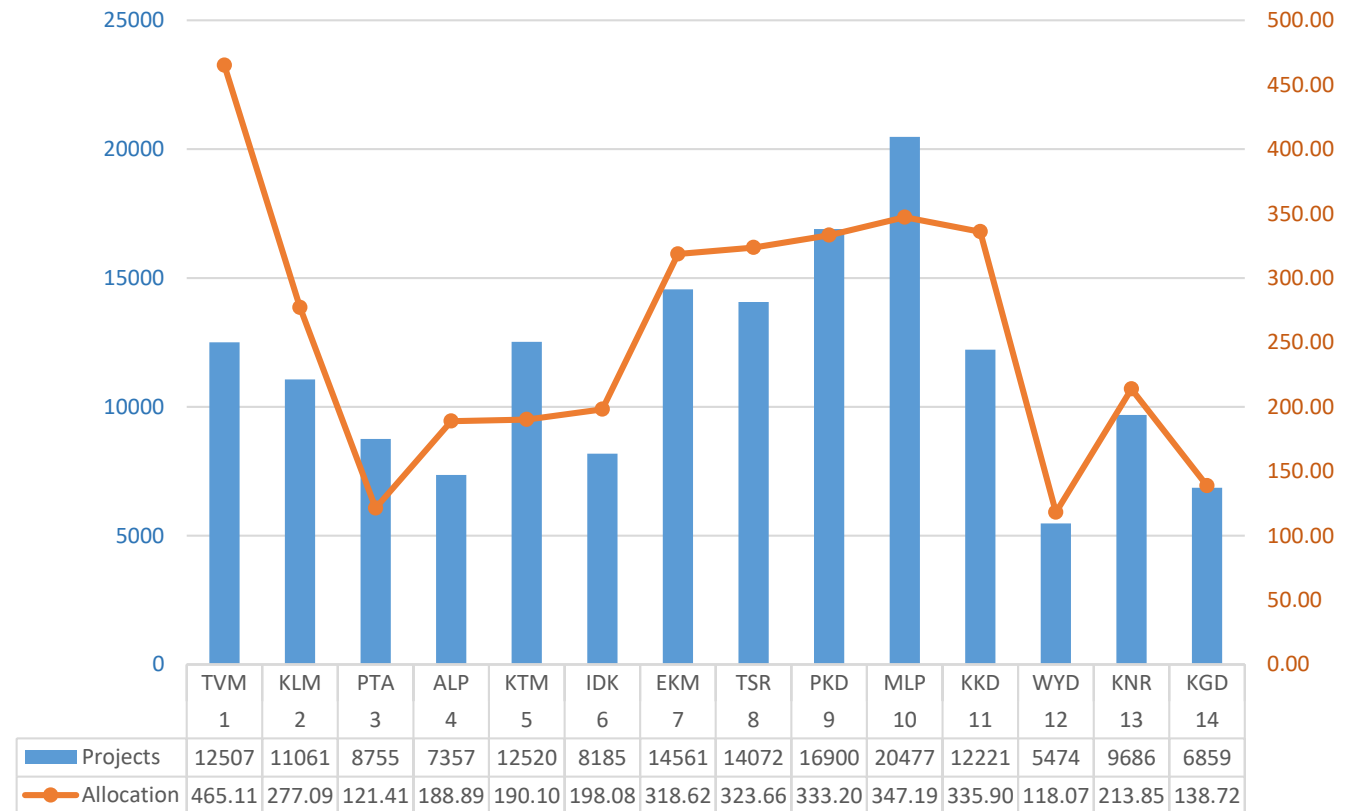
1.6 Lakhs
Engineering
Projects

3,568.89
Cr
Allocation

Sl No	District	Projects	Allocation
1	Thiruvananthapuram	12507	465.11
2	Kollam	11061	277.09
3	Pathanamthitta	8755	121.41
4	Alappuzha	7357	188.89
5	Kottayam	12520	190.10
6	Idukki	8185	198.08
7	Ernakulam	14561	318.62
8	Thrissur	14072	323.66
9	Palakkad	16900	333.20
10	Malappuram	20477	347.19
11	Kozhikode	12221	335.90
12	Wayanad	5474	118.07
13	Kannur	9686	213.85
14	Kasargod	6859	138.72
Total		160635	3569.89

Allocation amount Rs in Cr

Engineering Projects and Allocation amount in FY 2018-19



Collaboration between institutions of LSGIs & Higher Education

- How can LSGIs and Institutions of Higher Education collaborative for a win-win situation?
- Especially Engineering Colleges and Technical Institutions.
- The following broad areas
 1. Internship for Young Engineers with LSGIs
 2. Consultancies by Departments and Teachers
 3. Project work by Departments and Teachers
 4. Project work of UG & PG Students in LSGIs
 5. Engineering Startups



What we offer to institutions

- Opportunity to work in Live Projects on real time basis in LSGIs.
- Internship – An excellent opportunity for Young Engineers in LSGIs.
- Departments to extend their Knowledge, Expertise and Skills to LSGIs and to enrich their experience and opportunity to earn additional resources.
- Any other suggestions from Academic Community



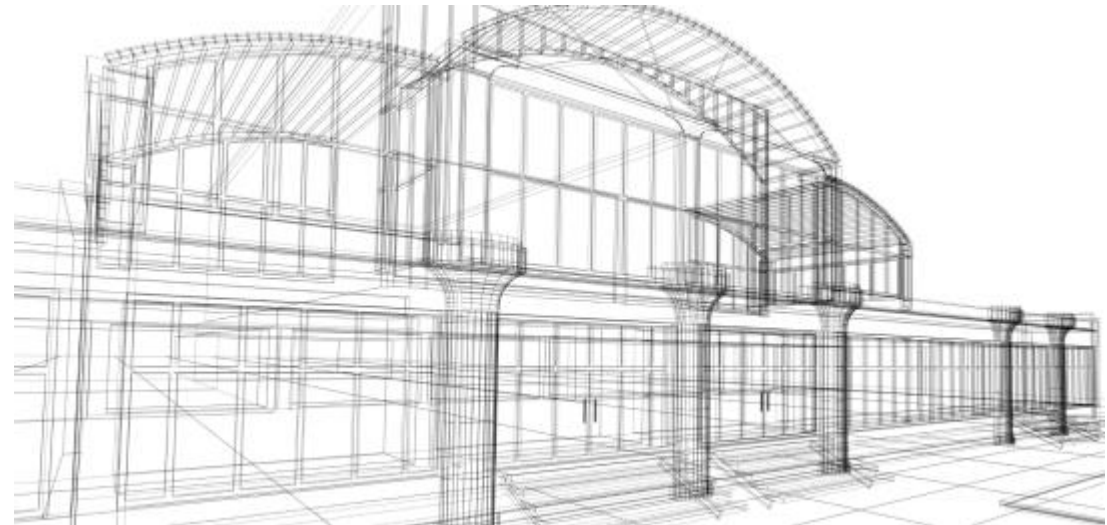
Engineering Startups

- Kerala Government encourage and promote Startup companies.
- KSIDC extending separate facilities, funds and handholding Startup Companies.
- Opportunity for startup to venture into growing engineering companies.



Project works in LSGIs

- We have so many projects in LSGIs awaiting your Knowledge, Expertise and Intelligence for resolving them by:
 - Teachers
 - Students
 - Teachers & Students jointly



Thank You

